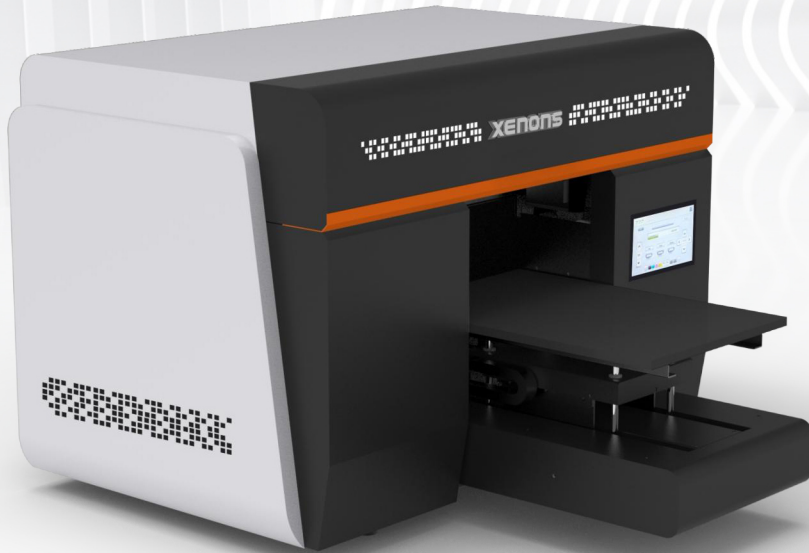
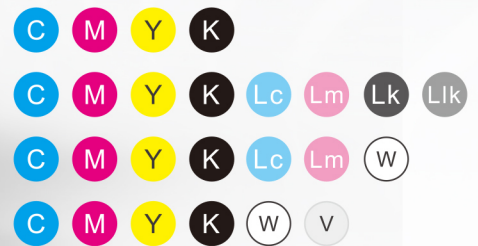


# A3 UV PRINTER

Full range of solutions to meet your production needs, low-cost, high performance flatbed UV printer.

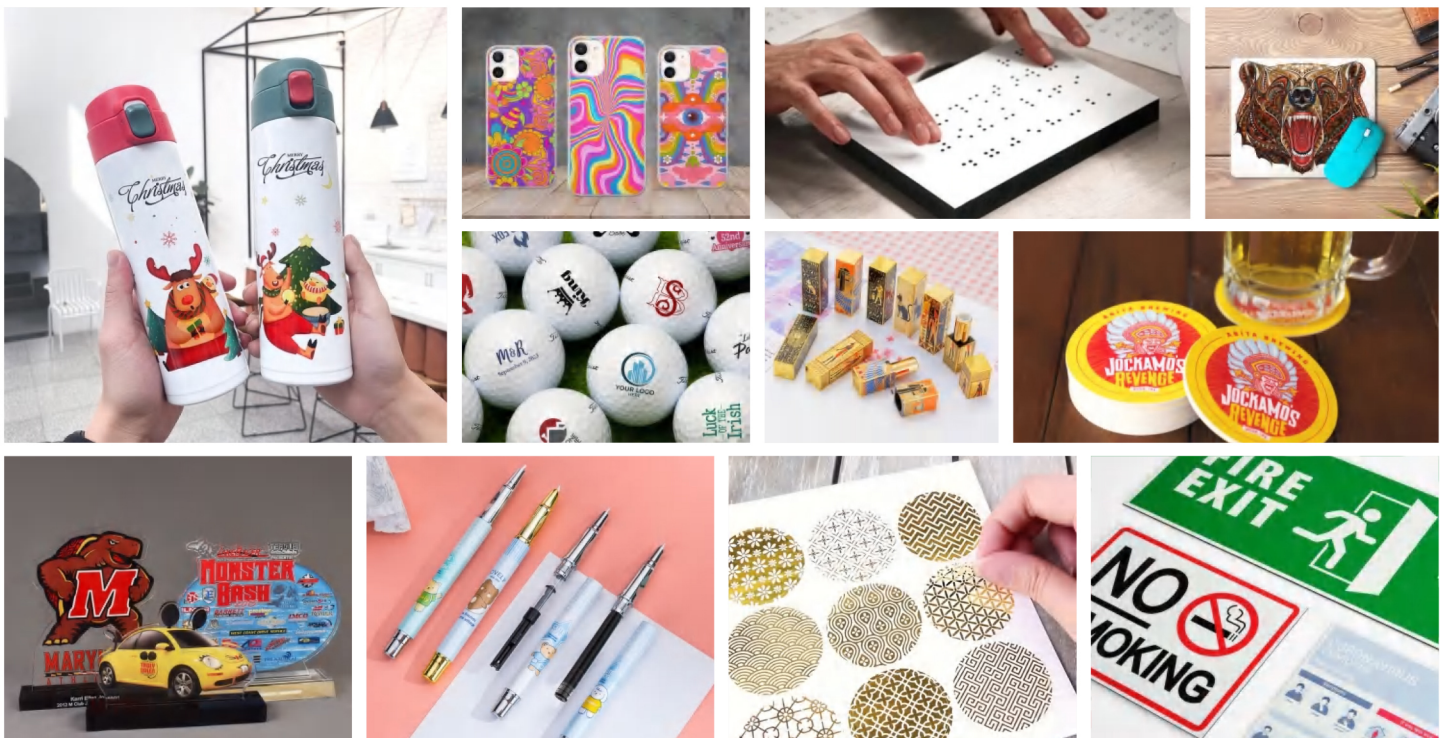


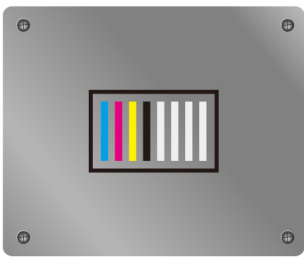
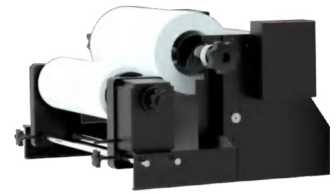
300\*460mm



## Application

Such as flat printing include compliant braille sign printing, Acrylic, Wood and Metal Signs, Awards, Plaques, Cell Phone, Golf Ball and Crystal labels etc;  
Roll printing include self-adhesive sticker; Cylinder printing include thermos cups and Mug cups.



**I3200HD\*1****Multifunctional optional devices****4C+4SP****Rolling fixture****Cylinder fixture****UV DTF fixture**

High Resolution



High Speed



Small Size



Multifunctional



Intelligent



Easy Operating

**Full coverage shade cover**

Light-shielding, dust-proof, touch-proof.

**EPSON 13200 Print head**

1200 dpi reaches the highest resolution in the industry, creating excellent photo quality.

**Intelligent Ink Supply System**

New ink cartridge design, with ink automatic circulation, ink shortage alarm function.

**Multifunction control panel**

Humanized design, in line with human habits, flexible and easy to operate.

**Lifting vacuum table**

High-precision honeycomb hard aluminum platform, the flatness is controlled within 0.1mm.

**Lifting capping station design**

The motor drives the capping station to rise and fall, precisely controls the position of the carriage, and better protects the nozzle.

**Specifications**

Model	A3
Printhead Type	1*EPSON i3200
Max.Resolution	720*1200dpi
Table Size	300*460mm
Print Speed	Max 5.5sqm/h
Print Method	White,Color,Varnish at same time
Max.Supported ink colors	8colors
Print Mode	CMYK+W+V/CMYKLcLm+W/CMYKLcLmLkLlK/CMYK
Print Thickness	Max.95mm
Inks type	Environmental friendly UV/LED curable ink
Ink Curing system	LED UV Curing System
Software	Standard RIP
Connectivity	USB3.0/Ethernet
Power	Single Phase , 220VAC±10 % , 50 / 60HZ
Environment	Temp . 15-32 ; RH 40-65%
Machine Dimension(L*W*H)	1140*860*640mm
Package Dimension(L*W*H)	1170*1040*810mm,110KG